

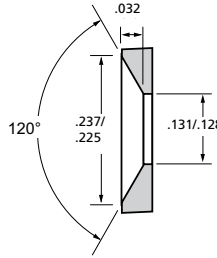
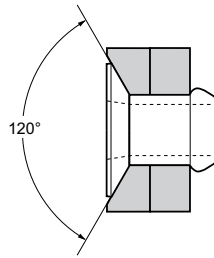
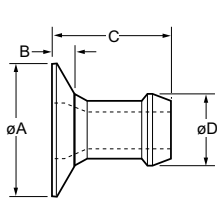
# Avdel® Briv® 1802 Series Speed Fastener



For installation information please refer to the tooling overview and manuals on our website.  
 Pour les conditions de pose, merci de vous référer à la description de l'outil et aux manuels disponibles sur notre site Web.  
 Angaben zur Verarbeitung entnehmen Sie bitte der Geräteübersicht und den Betriebsanleitungen auf unserer Website.  
 Per informazioni sull'installazione preghiamo consultare i manuali e la panoramica degli attrezzi sul nostro sito web.  
 Para ver información sobre máquinas de colocación, consulte nuestra página web, apartados visión general de máquinas y manuales.

English	Français	Deutsch	Italiano	Español
120° Countersunk	120° Tête fraisée	120° Senkkopf	120° Testa svasata	120° Cabeza avellanada
Aluminium alloy* (5 % Mg) Natural	Alliage d'aluminium* (5% Mg) Brut	Aluminium* (5 % Mg) Blank	Lega di alluminio* (5% Mg) Nessuna finitura	Aluminio* (5% Mg) Natural

\*: BS 1473 5056A DIN 1725 AlMg5 Werkstoff 3.3555



Rec. c/sunk hole dimensions (ø 1/8" only)  
 Dimensions recommandées du trou fraisé (1/8" seulement)  
 Empf. Abmessungen für Senkloch (nur ø 1/8")  
 Dimensioni raccomandate del foro svasato (solo 1/8").  
 Dimensiones del taladro avellanado recomendadas (solo 1/8")

ø	Ø		Ø		ØA	B	C	ØD	lb <sup>f1</sup>	lb <sup>f1</sup>	Fasteners per pod / Nombre de rivets par chargeur / Niete pro Magazin / Rivetti per caricatore / Uds./carga	Part No/ref
	min.	max.	min.	max.								
1/8"	.060	.110	.1285	.1315	.235	.030	.188	.1245	170	295	64	01802-00406
	.100	.150					.228				52	01802-00407
	.140	.190					.268				44	01802-00408
	.180	.230					.308				38	01802-00410
	.220	.270					.348				33	01802-00411
5/32"	.062	.115	.1562	.1592	.275	.040	.204	.1535	255	390	59	01802-00505
	.085	.135					.224				54	01802-00506
	.105	.155					.244				49	01802-00507
	.145	.195					.284				42	01802-00509
	.185	.235					.324				36	01802-00511
	.225	.275					.364				32	01802-00513

all dimensions in inches / en pouces / alle Maße in Zoll / in pollici / en pulgadas

1) typical values / valeurs moyennes / typische Werte / Valori tipici / resistencias máximas recomendadas

**STANLEY**  
 Engineered Fastening

© 2013 Stanley Black & Decker, Inc., Rev. 03.2012 • www.StanleyEngineeredFastening.com

Briv® is a trademark of Avdel UK Ltd.

Data shown is subject to change without prior notice as a result of continuous product development and improvement policy.  
 Your local Avdel representative is at your disposal should you need to confirm latest information.