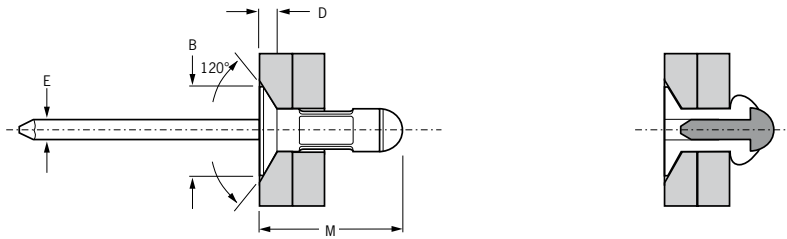


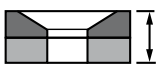

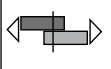



For installation information please refer to the tooling overview and manuals on our website.
 Pour les conditions de pose, merci de vous référer à la description de l'outil et aux manuels disponibles sur notre site Web.
 Angaben zur Verarbeitung entnehmen Sie bitte der Geräteübersicht und den Betriebsanleitungen auf unserer Website.
 Per informazioni sull'installazione preghiamo consultare i manuali e la panoramica degli attrezzi sul nostro sito web.
 Para ver información sobre máquinas de colocación, consulte nuestra página web, apartados visión general de máquinas y manuales.

English	Français	Deutsch	Italiano	Español
120° Countersunk head	120° Tête fraisée	120° Senkkopf	120° Testa svasata	120° Cabeza avellanada
Body: Aluminium alloy* (2.5 % Mg) Natural	Corps: Alliage d'aluminium* (2.5% Mg) Brut	Hülse: Aluminium* (2.5 % Mg) Blank	Corpo: Lega di alluminio* (2.5% Mg) Nessuna finitura	Cuerpo: Aluminio* (2.5% Mg) Natural
Stem: Low carbon steel**	Tige: Acier bas carbone**	Dorn: Stahl**	Gambo: Acciaio a basso tenore di carbonio**	Vástago: Acero bajo en carbono**
Zinc coated	Revêtement zingué	Verzinkt	Zincato	Zincado

*: AA 5052, DIN 1725, AlMg2.5, Werkstoff 3.3523
 **: B53111 Type 0, SAE 1015/1018/1022, DIN 1654, Cq15/Cq22



ø nom.					M max.	øB max.	D max.	øE max.	 kN ¹⁾	 kN ¹⁾	Part No/ref
	min.	max.	min.	max.							
3.2 (1/8")	2.4	6.3	3.3	3.4	12.2	5.6	1.3	1.8	0.69	0.91	01604-00412
	4.0	7.9			13.4						01604-00414
	5.5	9.5			14.8						01604-00416
4.0 (5/32")	2.8	7.9	4.1	4.2	14.3	6.6	1.4	2.2	1.13	1.33	01604-00514
	3.6	8.8			15.1						01604-00515
4.8 (3/16")	3.2	7.9	4.9	5.0	15.5	9.0	1.8	2.9	1.55	2.35	01604-00615
	6.3	12.7			20.4						01604-00621

all dimensions in mm / en millimètre / alle Maße in mm / in millimetri / en milímetros

1) typical values / valeurs moyennes / typische Werte / Valori tipici / valores típicos