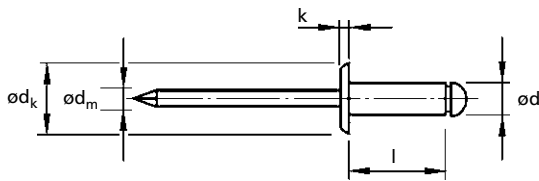


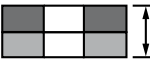

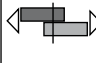



For installation information please refer to the tooling overview and manuals on our website.
 Pour les conditions de pose, merci de vous référer à la description de l'outil et aux manuels disponibles sur notre site Web.
 Angaben zur Verarbeitung entnehmen Sie bitte der Geräteübersicht und den Betriebsanleitungen auf unserer Website.
 Per informazioni sull'installazione preghiamo consultare i manuali e la panoramica degli attrezzi sul nostro sito web.
 Para ver información sobre máquinas de colocación, consulte nuestra página web, apartados visión general de máquinas y manuales.

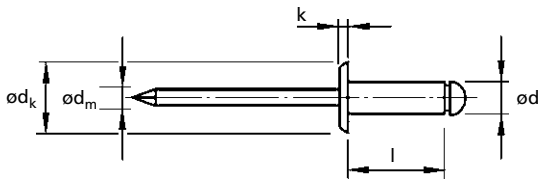
English	Français	Deutsch	Italiano	Español
Dome head	Tête plate	Flachrundkopf	Testa tonda	Cabeza alomada
Body: Aluminium alloy*	Corps: Alliage d'aluminium*	Hülse: Aluminium*	Corpo: Lega di alluminio*	Cuerpo: Aluminio*
Polished	Poli	Blank	Lucido	Pulido
Stem: Steel Zinc plated	Tige: Acier Revêtement zingué	Dorn: Stahl Verzinkt	Gambo: Acciaio Zincato	Vástago: Acero Zincado



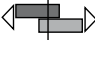

*: AlMg2.5/3.5



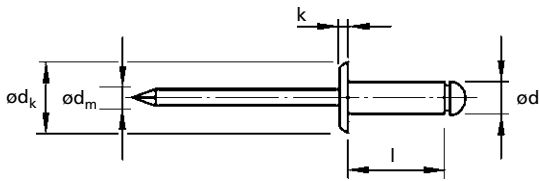
ø nom.				ød	l	ød _k	k	ød _m	 kN	 kN	Part No/ref
	min.	max.									
2.4 (3/32")		2.0	2.5	2.4	4.0	5.0	0.7	1.45	0.315	0.355	OBD01-02404
	2.0	4.0			6.0						OBD01-02406
	4.0	6.0			8.0						OBD01-02408
	6.0	8.0			10.0						OBD01-02410
3.0		1.5	3.1	3.0	4.0	6.5	0.8	1.75	0.62	0.81	OBD01-03004
	1.5	3.5			6.0						OBD01-03006
	3.5	5.5			8.0						OBD01-03008
	5.5	7.5			10.0						OBD01-03010
	7.5	9.5			12.0						OBD01-03012
	9.5	11.5			14.0						OBD01-03014
	11.5	13.5			16.0						OBD01-03016
3.2 (1/8")		1.5	3.3	3.2	4.0	6.5	0.8	1.75	0.76	0.98	OBD01-03204
	1.5	3.5			6.0						OBD01-03206
	3.5	5.5			8.0						OBD01-03208
	5.5	7.5			10.0						OBD01-03210
	7.5	9.5			12.0						OBD01-03212
	9.5	11.5			14.0						OBD01-03214
	11.5	13.5			16.0						OBD01-03216
	13.5	15.5			18.0						OBD01-03218
	15.5	17.5			20.0						OBD01-03220

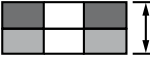



all dimensions in mm / en millimètre / alle Maße in mm / in millimetri / en milímetros



ø nom.				ød +0.08 -0.15	l +1.0 -0.2	ød _k -1.0	k ±0.3	ød _m	 kN	 kN	Part No/ref
	min.	max.									
4.0 (5/32")	1.5	3.0	4.1	4.0	6.0	8.0	1.0	2.1	1.2	1.6	OBD01-04006
	3.0	5.0			8.0						OBD01-04008
	5.0	6.5			10.0						OBD01-04010
	6.5	8.5			12.0						OBD01-04012
	8.5	10.5			14.0						OBD01-04014
	10.5	12.5			16.0						OBD01-04016
	12.5	14.5			18.0						OBD01-04018
	14.5	16.5			20.0						OBD01-04020
	16.5	19.0			23.0						OBD01-04023
	19.0	21.5			25.0						OBD01-04025
4.8 (3/16")	1.0	3.0	4.9	4.8	6.0	9.5	1.1	2.7	1.69	2.23	OBD01-04806
	3.0	4.5			8.0						OBD01-04808
	4.5	6.0			10.0						OBD01-04810
	6.0	8.0			12.0						OBD01-04812
	8.0	10.0			14.0						OBD01-04814
	10.0	12.0			16.0						OBD01-04816
	12.0	14.0			18.0						OBD01-04818
	14.0	16.0			20.0						OBD01-04820
	16.0	18.0			22.0						OBD01-04822
	18.0	21.0			25.0						OBD01-04825
	21.0	23.5			28.0						OBD01-04828
	23.5	25.0			30.0						OBD01-04830
	25.0	30.0			35.0						OBD01-04835
	30.0	35.0			40.0						OBD01-04840
5.0	1.0	3.0	5.1	5.0	6.0	9.5	1.1	2.7	2.0	2.5	OBD01-05006
	3.0	4.5			8.0						OBD01-05008
	4.5	6.0			10.0						OBD01-05010
	6.0	8.0			12.0						OBD01-05012
	8.0	10.0			14.0						OBD01-05014
	10.0	12.0			16.0						OBD01-05016
	12.0	14.0			18.0						OBD01-05018
	14.0	17.0			21.0						OBD01-05021
	17.0	20.0			25.0						OBD01-05025
	20.0	23.0			27.0						OBD01-05027
	23.0	25.0			30.0						OBD01-05030
	25.0	30.0			35.0						OBD01-05035
	30.0	35.0			40.0						OBD01-05040

all dimensions in mm / en millimètre / alle Maße in mm / in millimetri / en milímetros



ϕ nom.				ϕd +0.08 -0.15	l +1.0 -0.2	ϕd_k 12.0 [-1.5]	k ± 0.4	ϕd_m 3.6	 kN	 kN	Part No/ref
	min.	max.									
6.0	2.0	4.0	6.1	6.0	8.0	12.0 [-1.5]	1.5	3.6	3.0	3.9	OBD01-06008
	4.0	6.0			10.0						OBD01-06010
	6.0	8.0			12.0						OBD01-06012
	7.0	9.0			14.0						OBD01-06014
	9.0	11.0			16.0						OBD01-06016
	11.0	13.0			18.0						OBD01-06018
	13.0	17.0			22.0						OBD01-06022
	17.0	20.0			26.0						OBD01-06026
	20.0	24.0			30.0						OBD01-06030
6.4 (1/4")	2.5	6.0	6.5	6.4	10.0	13.0 [-1.5]	1.8	3.85	3.12	4.09	OBD01-06410
	4.0	6.0			12.0						OBD01-06412
	6.0	9.0			15.0						OBD01-06415
	9.0	13.0			18.0						OBD01-06418
	13.0	16.0			22.0						OBD01-06422
	16.0	20.0			26.0						OBD01-06426
	18.0	24.0			30.0						OBD01-06430

all dimensions in mm / en millimètre / alle Maße in mm / in millimetri / en milímetros