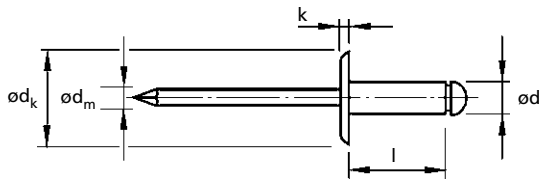




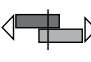



For installation information please refer to the tooling overview and manuals on our website.
 Pour les conditions de pose, merci de vous référer à la description de l'outil et aux manuels disponibles sur notre site Web.
 Angaben zur Verarbeitung entnehmen Sie bitte der Geräteübersicht und den Betriebsanleitungen auf unserer Website.
 Per informazioni sull'installazione preghiamo consultare i manuali e la panoramica degli attrezzi sul nostro sito web.
 Para ver información sobre máquinas de colocación, consulte nuestra página web, apartados visión general de máquinas y manuales.

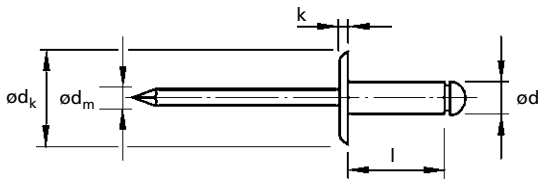
English	Français	Deutsch	Italiano	Español
Large head	Tête large	Flachrundkopf extragroß	Testa larga	Cabeza ancha
Body: Aluminium alloy*	Corps: Alliage d'aluminium*	Hülse: Aluminium*	Corpo: Lega di alluminio*	Cuerpo: Aluminio*
Polished	Poli	Blank	Lucido	Pulido
Stem: Steel Zinc plated	Tige: Acier Revêtement zingué	Dorn: Stahl Verzinkt	Gambo: Acciaio Zincato	Vástago: Acero Zincado

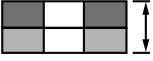

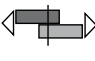

*: AlMg3.5



ø nom.				ød	l	ød _k	k	ød _m			Part No/ref
	min.	max.									
3.2 (1/8")	1.5	3.5	3.3	3.2	6.0	9.5	2.0	1.7	0.76	0.98	OBD02-03206
	3.5	5.5			8.0						OBD02-03208
	5.5	7.5			10.0						OBD02-03210
	7.5	9.5			12.0						OBD02-03212
	9.5	11.5			14.0						OBD02-03214
4.0 (5/32")	1.5	3.0	4.1	4.0	6.0	12.0	2.5	2.1	1.20	1.60	OBD02-04006
	3.0	5.0			8.0						OBD02-04008
	5.0	6.5			10.0						OBD02-04010
	6.5	8.5			12.0						OBD02-04012
	8.5	10.5			14.0						OBD02-04014
	10.5	12.5			16.0						OBD02-04016

all dimensions in mm / en millimètre / alle Maße in mm / in millimetri / en milímetros



ø nom.				ød	l	ød _k	k	ød _m			Part No/ref
	min.	max.									
4.8 (3/16")	3.0	4.5	4.9	4.8	8.0	14.0	2.5	2.7	1.69	2.23	0BD02-04808
	4.5	6.0			10.0						0BD02-04810
	6.0	8.0			12.0						0BD02-04812
	8.0	10.0			14.0						0BD02-04814
	10.0	12.0			16.0						0BD02-04816
	12.0	14.0			18.0						0BD02-04818
	14.0	16.0			20.0						0BD02-04820
	16.0	18.0			22.0						0BD02-04822
	18.0	21.0			24.0						0BD02-04824
	19.5	22.0			26.0						0BD02-04826
	21.0	23.5			28.0						0BD02-04828
	23.0	25.0			30.0						0BD02-04830
25.0	30.0	35.0	0BD02-04835								
5.0	3.0	4.5	5.1	5.0	8.0	14.0	2.5	2.7	2.00	2.50	0BD02-05008
	4.5	6.0			10.0						0BD02-05010
	6.0	8.0			12.0						0BD02-05012
	8.0	10.0			14.0						0BD02-05014
	10.0	12.0			16.0						0BD02-05016
	12.0	14.0			18.0						0BD02-05018
	14.0	17.0			21.0						0BD02-05021
	17.0	20.0			24.0						0BD02-05024

all dimensions in mm / en millimètre / alle Maße in mm / in millimetri / en milímetros