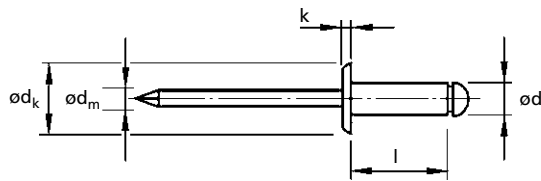




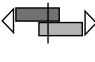



For installation information please refer to the tooling overview and manuals on our website.
 Pour les conditions de pose, merci de vous référer à la description de l'outil et aux manuels disponibles sur notre site Web.
 Angaben zur Verarbeitung entnehmen Sie bitte der Geräteübersicht und den Betriebsanleitungen auf unserer Website.
 Per informazioni sull'installazione preghiamo consultare i manuali e la panoramica degli attrezzi sul nostro sito web.
 Para ver información sobre máquinas de colocación, consulte nuestra página web, apartados visión general de máquinas y manuales.

English	Français	Deutsch	Italiano	Español
Dome head	Tête plate	Flachrundkopf	Testa tonda	Cabeza alomada
Body: Aluminium alloy*	Corps: Alliage d'aluminium*	Hülse: Aluminium*	Corpo: Lega di alluminio*	Cuerpo: Aluminio*
Polished	Poli	Blank	Lucido	Pulido
Stem: Stainless steel**	Tige:Inox**	Dorn: Edelstahl**	Gambo: Acciaio inox**	Vástago: Acero inoxidable**

*: AlMg3
 **: A2



ø nom.				ød	l	ød _k	k	ød _m	 kN	 kN	Part No/ref
	min.	max.									
3.0	1.5	3.5	3.1	3.0 [+0.08 -0.10]	6.0	6.5 [-0.7]	0.8 [±0.2]	1.75	0.62	0.81	OBD05-03006
	3.5	5.5			8.0						OBD05-03008
	5.5	7.0			10.0						OBD05-03010
	7.0	9.0			12.0						OBD05-03012
3.2 (1/8")	1.5	3.5	3.3	3.2 [+0.08 -0.10]	6.0	6.5 [-0.7]	0.8 [±0.2]	1.95	0.76	0.98	OBD05-03206
	3.5	5.5			8.0						OBD05-03208
	5.5	7.0			10.0						OBD05-03210
	7.0	9.0			12.0						OBD05-03212
4.0 (5/32")	1.0	3.0	4.1	4.0 [+0.08 -0.15]	6.0	8.0 [-1.0]	1.0 [±0.3]	2.1	1.20	1.60	OBD05-04006
	3.0	5.0			8.0						OBD05-04008
	5.0	7.0			10.0						OBD05-04010
	7.0	9.0			12.0						OBD05-04012
4.8 (3/16")	2.5	4.5	4.9	4.8 [+0.08 -0.15]	8.0	9.5 [-1.0]	1.1 [±0.3]	2.7	1.69	2.23	OBD05-04808
	4.5	6.5			10.0						OBD05-04810
	6.5	8.5			12.0						OBD05-04812
	8.5	10.5			14.0						OBD05-04814
	10.5	12.5			16.0						OBD05-04816
	12.5	14.5			18.0						OBD05-04818
	14.5	16.5			20.0						OBD05-04820
5.0	2.5	4.5	5.1	5.0 [+0.08 -0.15]	8.0	9.5 [-1.0]	1.1 [±0.3]	2.7	2.00	2.50	OBD05-05008
	4.5	6.5			10.0						OBD05-05010
	6.5	8.5			12.0						OBD05-05012
	10.5	12.5			16.0						OBD05-05016

all dimensions in mm / en millimètre / alle Maße in mm / in millimetri / en milímetros