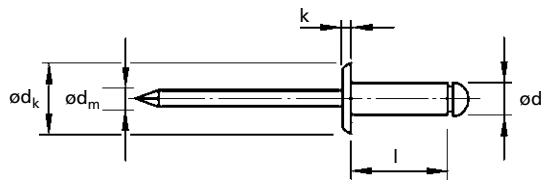
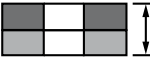

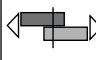





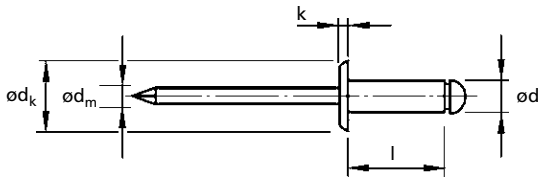
For installation information please refer to the tooling overview and manuals on our website.
 Pour les conditions de pose, merci de vous référer à la description de l'outil et aux manuels disponibles sur notre site Web.
 Angaben zur Verarbeitung entnehmen Sie bitte der Geräteübersicht und den Betriebsanleitungen auf unserer Website.
 Per informazioni sull'installazione preghiamo consultare i manuali e la panoramica degli attrezzi sul nostro sito web.
 Para ver información sobre máquinas de colocación, consulte nuestra página web, apartados visión general de máquinas y manuales.

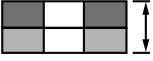

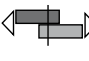

English	Français	Deutsch	Italiano	Español
Dome head	Tête plate	Flachrundkopf	Testa tonda	Cabeza alomada
Body: Steel Zinc plated	Corps: Acier Revêtement zingué	Hülse: Stahl Verzinkt	Corpo: Acciaio Zincato	Cuerpo: Acero Zincado
Stem: Steel Zinc plated	Tige: Acier Revêtement zingué	Dorn: Stahl Verzinkt	Gambo: Acciaio Zincato	Vástago: Acero Zincado



ø nom.				ød	l +1.0 -0.2	ød _k	k	ød _m	 kN	 kN	Part No/ref
	min.	max.									
3.0	1.5	3.0	3.1	3.0 [+0.08 -0.10]	6.0	6.5 [-0.7]	0.8 [±0.2]	1.9	0.915	1.125	OBD11-03006
	3.0	5.0			8.0						OBD11-03008
	5.0	7.0			10.0						OBD11-03010
	7.0	9.0			12.0						OBD11-03012
	9.0	11.0			14.0						OBD11-03014
3.2 (1/8")	1.5	3.0	3.3	3.2 [+0.08 -0.10]	6.0	6.5 [-0.7]	0.8 [±0.2]	2.0	1.06	1.285	OBD11-03206
	3.0	5.0			8.0						OBD11-03208
	5.0	7.0			10.0						OBD11-03210
	7.0	9.0			12.0						OBD11-03212
	9.0	11.0			14.0						OBD11-03214
11.0	13.0	16.0	OBD11-03216								
4.0 (5/32")	1.5	2.5	4.1	4.0 [+0.08 -0.15]	6.0	8.0 [-1.0]	1.0 [±0.3]	2.5	1.55	1.99	OBD11-04006
	2.5	4.5			8.0						OBD11-04008
	4.5	6.5			10.0						OBD11-04010
	6.5	8.5			12.0						OBD11-04012
	8.5	10.5			14.0						OBD11-04014
	10.5	12.5			16.0						OBD11-04016
	12.5	14.5			18.0						OBD11-04018
	14.5	16.5			20.0						OBD11-04020

all dimensions in mm / en millimètre / alle Maße in mm / in millimetri / en milímetros



ø nom.				ød	l	ød _k	k	ød _m	 kN	 kN	Part No/ref
	min.	max.									
4.8 (3/16")	1.0	2.5	4.9	4.8	6.0	9.5 [-1.0]	1.1 [±0.3]	2.9	2.30	2.92	OBD11-04806
	2.5	4.5			8.0						OBD11-04808
	4.5	6.0			10.0						OBD11-04810
	6.0	8.0			12.0						OBD11-04812
	8.0	10.0			14.0						OBD11-04814
	10.0	11.5			16.0						OBD11-04816
	11.5	13.5			18.0						OBD11-04818
	13.5	15.0			20.0						OBD11-04820
	15.0	17.0			22.0						OBD11-04822
	17.0	20.0			25.0						OBD11-04825
	20.0	23.0			28.0						OBD11-04828
23.0	26.0	30.0	OBD11-04830								
5.0	2.5	4.0	5.1	5.0	8.0	9.5 [-1.0]	1.1 [±0.3]	2.9	2.575	3.255	OBD11-05008
	4.0	6.0			10.0						OBD11-05010
	6.0	8.0			12.0						OBD11-05012
	8.0	10.0			14.0						OBD11-05014
	10.0	11.5			16.0						OBD11-05016
	11.5	13.5			18.0						OBD11-05018
	13.5	15.0			20.0						OBD11-05020
6.0	3.5	6.5	6.1	6.0	12.0	12.0 [-1.5]	1.5 [±0.4]	3.6	4.04	5.02	OBD11-06012
	6.5	9.5			15.0						OBD11-06015
	9.5	12.5			18.0						OBD11-06018
	13.5	16.5			22.0						OBD11-06022
	17.5	20.5			26.0						OBD11-06026
	21.5	24.5			30.0						OBD11-06030
6.4 (1/4")	3.5	6.5	6.5	6.4	12.0	13.0 [-1.5]	1.8 [±0.4]	3.85	4.355	5.415	OBD11-06412
	6.5	9.5			15.0						OBD11-06415
	9.5	12.5			18.0						OBD11-06418
	14.5	16.5			22.0						OBD11-06422
	18.5	20.5			26.0						OBD11-06426
	22.5	24.5			30.0						OBD11-06430

all dimensions in mm / en millimètre / alle Maße in mm / in millimetri / en milímetros