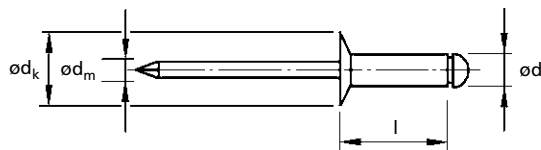


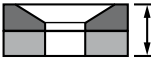

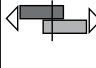



For installation information please refer to the tooling overview and manuals on our website.
 Pour les conditions de pose, merci de vous référer à la description de l'outil et aux manuels disponibles sur notre site Web.
 Angaben zur Verarbeitung entnehmen Sie bitte der Geräteübersicht und den Betriebsanleitungen auf unserer Website.
 Per informazioni sull'installazione preghiamo consultare i manuali e la panoramica degli attrezzi sul nostro sito web.
 Para ver información sobre máquinas de colocación, consulte nuestra página web, apartados visión general de máquinas y manuales.

English	Français	Deutsch	Italiano	Español
120° Countersunk head	120° Tête fraisée	120° Senkkopf	120° Testa svasata	120° Cabeza avellanada
Body: Stainless steel* Polished	Corps: Inox* Poli	Hülse: Edelstahl* Blank	Corpo: Acciaio inox* Lucido	Cuerpo: Acero inoxidable* Pulido
Stem: Stainless steel* Polished	Tige: Inox* Poli	Dorn: Edelstahl* Blank	Gambo: Acciaio inox* Lucido	Vástago: Acero inoxidable* Pulido

*: A2



ø nom.				ød	l	ød _k	ød _m			Part No/ref
	min.	max.								
3.2 (1/8")	1.5	2.5	3.3	3.2 [+0.08 -0.10]	6.0	6.0 [-0.4]	2.0	1.8	2.5	OBD23-03206
	2.5	4.5			8.0					OBD23-03208
	4.5	6.5			10.0					OBD23-03210
	6.5	8.5			12.0					OBD23-03212
4.0 (5/32")		2.0	4.1	4.0 [+0.08 -0.15]	6.0	7.5 [-0.5]	2.5	3.1	3.8	OBD23-04006
	2.0	4.0			8.0					OBD23-04008
	4.0	6.0			10.0					OBD23-04010
	6.0	8.0			12.0					OBD23-04012
	9.0	11.0			15.0					OBD23-04015
4.8 (3/16")	1.5	3.0	4.9	4.8 [+0.08 -0.15]	8.0	9.0 [-0.5]	2.9	4.5	6.0	OBD23-04808
	3.0	5.0			10.0					OBD23-04810
	5.0	7.0			12.0					OBD23-04812
	8.0	10.0			15.0					OBD23-04815
	11.0	13.0			18.0					OBD23-04818
	14.0	16.0			21.0					OBD23-04821
	18.0	20.0			25.0					OBD23-04825

all dimensions in mm / en millimètre / alle Maße in mm / in millimetri / en milímetros