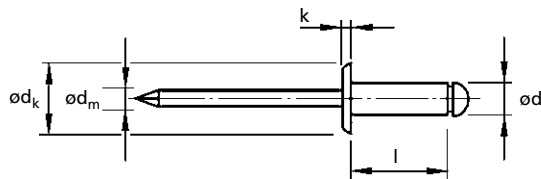




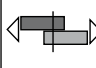



For installation information please refer to the tooling overview and manuals on our website.
 Pour les conditions de pose, merci de vous référer à la description de l'outil et aux manuels disponibles sur notre site Web.
 Angaben zur Verarbeitung entnehmen Sie bitte der Geräteübersicht und den Betriebsanleitungen auf unserer Website.
 Per informazioni sull'installazione preghiamo consultare i manuali e la panoramica degli attrezzi sul nostro sito web.
 Para ver información sobre máquinas de colocación, consulte nuestra página web, apartados visión general de máquinas y manuales.

English	Français	Deutsch	Italiano	Español
Dome head	Tête plate	Flachrundkopf	Testa tonda	Cabeza alomada
Body: Stainless steel* Polished	Corps: Inox* Poli	Hülse: Edelstahl* Blank	Corpo: Acciaio inox* Lucido	Cuerpo: Acero inoxidable* Pulido
Stem: Stainless steel* Polished	Tige: Inox* Poli	Dorn: Edelstahl* Blank	Gambo: Acciaio inox* Lucido	Vástago: Acero inoxidable* Pulido

*: A4



ø nom.				ød	l	ød _k	k	ød _m			Part No/ref
	min.	max.									
3.0	1.5	2.5	3.1	3.0 [+0.08 -0.10]	6.0	6.5 [-0.7]	0.8 [±0.2]	1.9	1.6	2.0	OBD24-03006
	2.5	4.5			8.0						OBD24-03008
	4.5	6.5			10.0						OBD24-03010
3.2 (1/8")	1.5	2.5	3.3	3.2 [+0.08 -0.10]	6.0	6.5 [-0.7]	0.8 [±0.2]	2.0	1.8	2.5	OBD24-03206
	2.5	4.5			8.0						OBD24-03208
	4.5	6.5			10.0						OBD24-03210
	6.5	8.5			12.0						OBD24-03212
4.0 (5/32")		2.0	4.1	4.0 [+0.08 -0.15]	6.0	8.0 [-1.0]	1.0 [±0.3]	2.5	3.1	3.8	OBD24-04006
	2.0	4.0			8.0						OBD24-04008
	4.0	6.0			10.0						OBD24-04010
	7.0	9.0			13.0						OBD24-04013
	10.0	12.0			16.0						OBD24-04016
4.8 (3/16")	1.5	3.0	4.9	4.8 [+0.08 -0.15]	8.0	9.5 [-1.0]	1.1 [±0.3]	2.9	4.5	6.0	OBD24-04808
	3.0	5.0			10.0						OBD24-04810
	5.0	7.0			12.0						OBD24-04812
	7.0	9.0			14.0						OBD24-04814
	9.0	11.0			16.0						OBD24-04816
	11.0	13.0			18.0						OBD24-04818

all dimensions in mm / en millimètre / alle Maße in mm / in millimetri / en milímetros