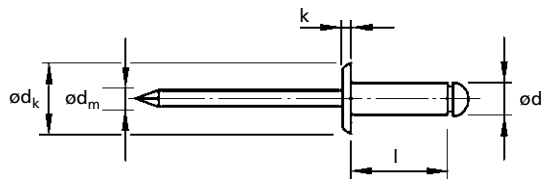
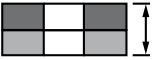

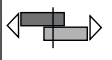




For installation information please refer to the tooling overview and manuals on our website.  
 Pour les conditions de pose, merci de vous référer à la description de l'outil et aux manuels disponibles sur notre site Web.  
 Angaben zur Verarbeitung entnehmen Sie bitte der Geräteübersicht und den Betriebsanleitungen auf unserer Website.  
 Per informazioni sull'installazione preghiamo consultare i manuali e la panoramica degli attrezzi sul nostro sito web.  
 Para ver información sobre máquinas de colocación, consulte nuestra página web, apartados visión general de máquinas y manuales.

English	Français	Deutsch	Italiano	Español
Dome head	Tête plate	Flachrundkopf	Testa tonda	Cabeza alomada
Body: Copper Polished	Corps: Cuivre Poli	Hülse: Kupfer Blank	Corpo: Rame Lucido	Cuerpo: Cobre Pulido
Stem: Steel Zinc plated	Tige: Acier Revêtement zingué	Dorn: Stahl Verzinkt	Gambo: Acciaio Zincato	Vástago: Acero Zincado



ø nom.				ød	l	ød <sub>k</sub>	k	ød <sub>m</sub>			Part No/ref
	min.	max.							kN	kN	
3.0	1.0	3.0	3.1	3.0 [+0.08 -0.10]	6.0	6.5 [-0.7]	0.8 [±0.2]	1.75	0.6	0.7	OBD31-03006
	3.0	5.0			8.0						OBD31-03008
	5.0	7.0			10.0						OBD31-03010
	7.0	9.0			12.0						OBD31-03012
3.2 (1/8")	1.0	3.0	3.3	3.2 [+0.08 -0.10]	6.0	6.5 [-0.7]	0.8 [±0.2]	1.95	0.7	0.8	OBD31-03206
	3.0	5.0			8.0						OBD31-03208
	5.0	7.0			10.0						OBD31-03210
	7.0	9.0			12.0						OBD31-03212
4.0 (5/32")	1.0	2.5	4.1	4.0 [+0.08 -0.15]	6.0	8.0 [-1.0]	1.0 [±0.3]	2.10	1.0	1.5	OBD31-04006
	2.5	4.5			8.0						OBD31-04008
	4.5	6.5			10.0						OBD31-04010
	6.5	8.5			12.0						OBD31-04012
	8.5	10.5			14.0						OBD31-04014
	10.5	12.5			16.0						OBD31-04016
4.8 (3/16")	1.5	3.5	4.9	4.8 [+0.08 -0.15]	8.0	9.5 [-1.0]	1.1 [±0.3]	2.70	1.5	2.0	OBD31-04808
	3.5	5.5			10.0						OBD31-04810
	5.5	7.5			12.0						OBD31-04812
	7.5	9.5			14.0						OBD31-04814
	9.5	11.5			16.0						OBD31-04816

all dimensions in mm / en millimètre / alle Maße in mm / in millimetri / en milímetros