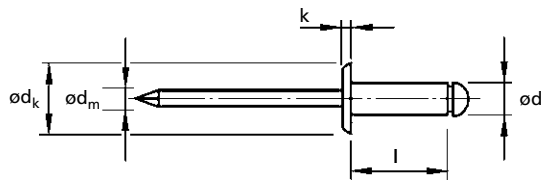



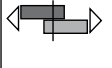
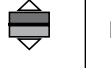


For installation information please refer to the tooling overview and manuals on our website.
 Pour les conditions de pose, merci de vous référer à la description de l'outil et aux manuels disponibles sur notre site Web.
 Angaben zur Verarbeitung entnehmen Sie bitte der Geräteübersicht und den Betriebsanleitungen auf unserer Website.
 Per informazioni sull'installazione preghiamo consultare i manuali e la panoramica degli attrezzi sul nostro sito web.
 Para ver información sobre máquinas de colocación, consulte nuestra página web, apartados visión general de máquinas y manuales.

English	Français	Deutsch	Italiano	Español
Dome head	Tête plate	Flachrundkopf	Testa tonda	Cabeza alomada
Body: Aluminium alloy*	Corps: Alliage d'aluminium*	Hülse: Aluminium*	Corpo: Lega di alluminio*	Cuerpo: Aluminio*
Polished	Poli	Blank	Lucido	Pulido
Stem: Aluminium alloy	Tige: Alliage d'aluminium	Dorn: Aluminium	Gambo: Lega di alluminio	Vástago: Aluminio
Polished	Poli	Blank	Lucido	Pulido

*: AlMg2.5



ø nom.			ød	l	ød _k	k	ød _m	 kN	 kN	Part No/ref
	min.	max.								
3.2 (1/8")	1.5	3.5	3.2 [+0.08 -0.10]	6.0	6.5 [-0.7]	0.8 [±0.2]	1.95	0.535	0.670	OBD41-03206
	3.5	5.5		8.0						OBD41-03208
	5.5	7.5		10.0						OBD41-03210
	7.5	9.5		12.0						OBD41-03212
	9.5	11.5		14.0						OBD41-03214
	11.5	13.5		16.0						OBD41-03216
4.0 (5/32")	1.5	3.0	4.0 [+0.08 -0.15]	6.0	8.0 [-1.0]	1.0 [±0.3]	2.45	0.845	1.025	OBD41-04006
	3.0	5.0		8.0						OBD41-04008
	5.0	7.0		10.0						OBD41-04010
	7.0	9.0		12.0						OBD41-04012
	9.0	11.0		14.0						OBD41-04014
	11.0	13.0		16.0						OBD41-04016
4.8 (3/16")	2.5	4.5	4.8 [+0.08 -0.15]	8.0	9.5 [-1.0]	1.1 [±0.3]	2.90	1.155	1.425	OBD41-04808
	4.5	6.5		10.0						OBD41-04810
	6.5	8.5		12.0						OBD41-04812
	8.5	10.5		14.0						OBD41-04814
	10.5	12.5		16.0						OBD41-04816
	12.5	14.5		18.0						OBD41-04818
	14.5	16.5		20.0						OBD41-04820
	19.5	21.5		25.0						OBD41-04825

all dimensions in mm / en millimètre / alle Maße in mm / in millimetri / en milímetros