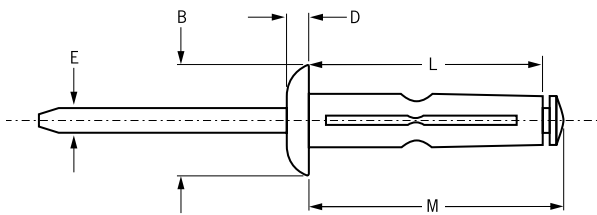


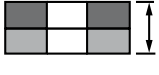

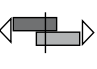



For installation information please refer to the tooling overview and manuals on our website.
 Pour les conditions de pose, merci de vous référer à la description de l'outil et aux manuels disponibles sur notre site Web.
 Angaben zur Verarbeitung entnehmen Sie bitte der Geräteübersicht und den Betriebsanleitungen auf unserer Website.
 Per informazioni sull'installazione preghiamo consultare i manuali e la panoramica degli attrezzi sul nostro sito web.
 Para ver información sobre máquinas de colocación, consulte nuestra página web, apartados visión general de máquinas y manuales.

English	Français	Deutsch	Italiano	Español
Protruding head	Tête bombée	Flachrundkopf	Testa tonda	Cabeza alomada
Body: Aluminium alloy* Wax lubricated	Corps: Alliage d'aluminium* Lubrifié	Hülse: Aluminium* Gewachst	Corpo: Lega di alluminio* Lubrificato	Cuerpo: Aluminio* Lubricado
Stem: Aluminium alloy** Wax lubricated	Tige: Alliage d'aluminium** Lubrifié	Dorn: Aluminium** Gewachst	Gambo: Lega di alluminio** Lubrificato	Vástago: Aluminio** Lubricado

*: 5056 **: 2024/5056



ø					M	øB	D	L	øE			Part No/ref
	min.	max.	min.	max.								
4.8 (3/16")	1.27	6.35	5.18	5.31	25.40	11.30	2.37	22.72	2.90	1.30	1.69	BAPK-06-04
	4.75	9.53			27.81			25.13				BAPK-06-06
	9.53	14.27			30.94			28.25				BAPK-06-09
6.4 (1/4")	1.52	6.35	6.40	6.65	26.47	14.22	3.00	23.50	3.84	1.87	2.62	BAPK-08-04
	4.75	9.53			29.64			26.67				BAPK-08-06

all dimensions in mm / en millimètres / alle Maße in mm / in millimetri / en milímetros

1) typical values / valeurs moyennes / typische Werte / Valori tipici / valores típicos